

Electrical Services we offer:

- Complete Electrical Safety Inspections
- All sizes of Service Upgrades
- Fast Storm Damage & Base Repairs
- Electrical Systems Troubleshooting
- 10-year Smoke/Carbon Detectors
- Lighting Installation & Replacement
- All sizes of Dedicated Circuits
- Whole Service Surge Protection
- Backup Generator Installation
- Whole House Fan Repair & Installation
- Vehicle Charging Stations



200 Amp Electrical Panel

**CALL US TODAY FOR A
FREE IN-HOME ESTIMATE!!**

913-362-2100

Who We Are:

We are Kansas City's #1 residential electrical contractor, family owned and operated. We service the entire Kansas & Missouri metro areas with an established reputation since 2002. We are licensed, bonded, insured and stand behind all our work with a trusted warranty.

Our Craftsmanship Guarantee:

Here at JMC Electric we go above and beyond for all our customers. Most companies offer a basic warranty, JMC however offers a lifetime craftsmanship warranty promising that all our equipment is installed properly the first time. Our warranty covers our service no questions asked. We also cover the parts we use – up to the manufactures warranty.

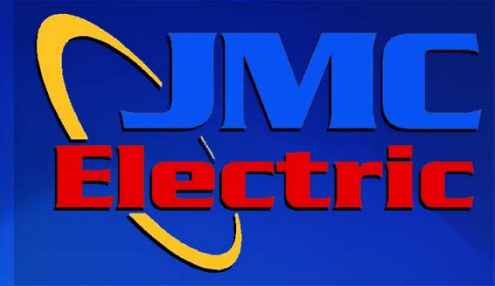


**3407 Merriam Dr.
Overland Park, Kansas 66203**



Sales@JMCElectricKC.com

913-362-2100



**100/200 Amp & Larger
Electrical Service Upgrades!**



Clean & safe installs done daily!

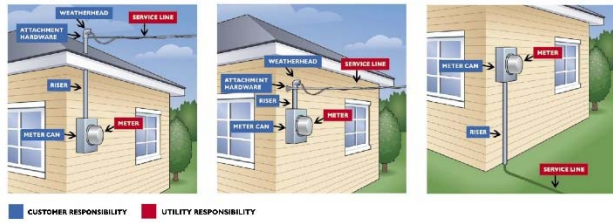


913-362-2100

Electrical Outside Service Responsibility

WHO IS RESPONSIBLE FOR FIXING WHAT?

If your electrical components are damaged, you may be responsible for repairs. Identify your type of service connection below to learn what your responsibilities are.



Electrical service outdated or damaged?

- ✓ Has the electrical system in your home been inspected recently by a licensed professional?
- ✓ Are the panel covers properly attached to the panel and does the cover latch close and open correctly?
- ✓ Is the Riser & Mast the right height and in proper locations?
- ✓ Are there any signs of deterioration on the panel? Rust, dents, or missing knockouts!
- ✓ Are the circuits breakers in the panel all the same brand and style?
- ✓ Do you have a proper main breaker to shut the service off?

If you have any concerns about the questions above, PLEASE CALL US TODAY FOR A FREE IN-HOME ESTIMATE!!

913-362-2100

5 Concerns for any Electrical Service!

1. **If your electrical service has not been updated in the last 20 years.** i.e. Fuses, Outdated breakers, improper locations.
2. **Undersized Existing Service** - No spare breaker spaces, excessive use of tandem breakers, 60- or 100-amp main breaker.
3. **Tripping Breakers / Overloaded Circuits**
Breakers are frequently tripping, flickering lights, devices that only work sometimes.
4. **Actual Panel or Service Deterioration** such as signs of arcing, discoloration of bus bar or panel interior, water damage, rust, breakers or burning smells.
5. **Updating your home or Appliances** if you are planning to do remodel wiring, updating the kitchen or basement, and / or purchasing new appliances, getting your service in order should be a priority.

Why whole service surge protection?

- Surges happen everyday and storms are normally not the cause.
- Surges are more common to be caused by equipment in your own home than outside sources.

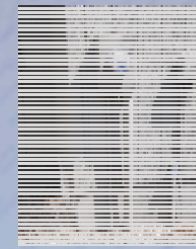
Whole Service Surge Protection \$799.00

Includes: HPD80 unit for 100/200 Amp services.

Standard Homeline 20/30 Amp 2pole breaker.

ALL LABOR is included, Only materials for panel spacing and special breakers additional.

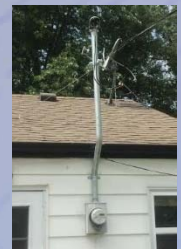
www.JMCElectricKC.com



Underground Service



Service Pigtail



Overhead Service



Breakers & Protective Equipment

Main Panels & Sub-Panels

- Main Disconnecting means
- Location Accessibility & Correctness
- SER 4 Wire for Neutral separation
 - Grounding & Bonding

Service Panel Replacement

- Updated Breakers
- Spacing for Dedicated Circuits
- AFCI/GFCI Breaker Compatibility

AFCI & GFCI Breakers

- Protection from Fires caused by Arcs
- Protection from Shock Hazards
- Code Compliance for 3prong outlets
- Protected wiring for older installations

913-362-2100